

Illinois
Land Improvement
Contractors Association

NEWSLETTER

November/December 2002

No. 3

Attend ILICA's 46th Annual Convention

January 16-17-18, 2003

Brandywine Holiday Inn

Peoria, Illinois

Educational Workshops

Display Booths

Awards Banquet

Door Prizes

Ladies Program

Caterpillar Tour

Silent Auction

Seven Corpse Mystery Dinner

Scavenger Hunt



PRSR STD
U.S. POSTAGE
PAID
SPRINGFIELD IL
PERMIT NO. 500



by Dwight Dunbar,
Consultant to ILICA

Financial Picture Worsens:

Springfield October 16, 2002 . . . As I finish this article, the 2002 General Election under a new "Democrat Map" is less than 3 weeks away. Our gubernatorial candidates have yet to enlighten us on how they plan to deal with the State's budget problems. Presently it looks like there will be a nearly \$2.0 billion hole before we've even begun to plan.

On top of this the revenue picture is becoming more and more dismal and the Illinois Economic & Fiscal Commission projects a \$300 to \$500 million shortfall in the current year - FY 03. Cutting waste won't fix this kind of problem.

Campaign Stuff:

Most of the interesting stuff is happening in Northern Illinois Districts like the 59th House District and the 15th Senate District. The 59th is an "open" Seat race involving rivals from Vernon Hills. South Chicago suburbs is the setting for the race in the 15th, that pits incumbent Democrat Bill Shaw against Independent James Meeks and a Republican.

In case you're not fed up with negative campaigning so

far just hang on I'd guess they will begin (or have begun) in every local race around during these last few days.

Every one I've talked to is preparing for a Democrat controlled Senate in addition to the already Democrat controlled House as well as the possibility of a Democrat governor, after November 5th. We'll have results to talk about next time.

Other Stuff:

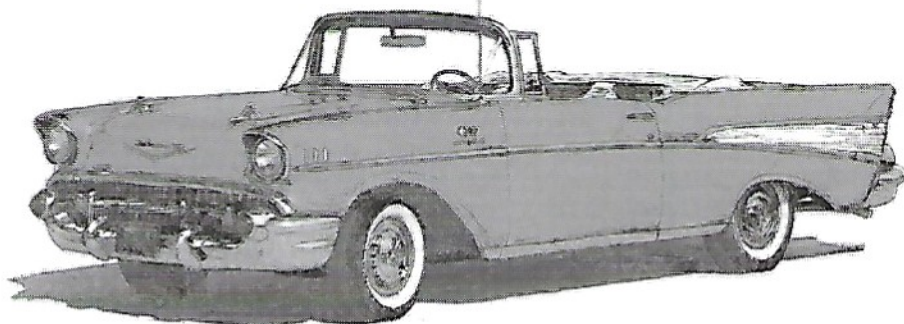
Several national organizations are meeting with the Ag Secretary on implementing the Conservation provisions of the Farm Bill. I know for a fact all major national Commodity Organizations have been invited including those representing the livestock industry. Perhaps things are coming together faster than the State FSA office expected.

The Midwest Area Rivers Coalition (MARC2000) is having its Annual Meeting in St. Louis, November 7 & 8, 2002. The Upper Mississippi, Illinois and Missouri Rivers are expected to receive the attendees' attention.

The General Assembly has scheduled a Perfunctory Session Day the 6th of November. That's a back slapp'in and congratulat'in day. Veto Session is scheduled for November 19-21 and December 3-5. There are less than 30 veto messages, however, so the agenda isn't real heavy. I ran into a friend of mine that is a Senate Doorman that he'd heard "Veto Session might be long." Governor Ryan has said for a long time there needs to be some sort of a budget crisis summit to discuss strategy for managing the problems it's created. He needs to polish up his legacy.



REMEMBER WHEN...



life was simple...

...cars had fewer options, but they were powerful, reliable, and affordable.

Today, you can order all the "bells and whistles"—CD players, GPS systems, TVs, heated leather seats. But, as we all know, these options cost more. It's the same with health care: THE "OPTIONS" ADDED TO HEALTH CARE PLANS INCREASE THE COST OF MEDICAL INSURANCE.

If you are a business owner who just wants an affordable, basic, health care vehicle—that's what Federated's new group plans are all about.*

To test-drive a powerful health care engine without the bells and whistles—a vehicle that's right for your business and your budget—call your local Federated Representative today. Or, call 1-800-533-0472 and ask for group health marketing. In addition to our basic models, we still offer a variety of fully-loaded plans.



*Some plans are not available in all states.



PRESIDENT'S MESSAGE

MEMBERSHIP, MEMBERSHIP, MEMBERSHIP! We need to continue to work on membership. There's lots of incentives right now to sign up a new member. The Membership Committee has announced a membership contest here in our state and the National Association is also running a contest with lots of cash and prizes. So let's make Illinois proud. Get out there and sign up at least one new contractor member. If you need help just call the state office or ask me or a member of the committee to help you.

Mark your calendar for January 16-17-18. We will be at the Brandywine Holiday Inn in Peoria for our 46th Annual Convention. The Education and Convention Committee have been hard at work planning programs and entertainment for you. Why not take advantage of this opportunity!

The ILICA Workshop will be held at Northfield Center in Springfield on February 25 & 26. Watch your mail for more information on this.

Information on the LICA convention is included in this Newsletter. There'll be lots of educational programs this year and you can register for the entire or just part of the convention. If you have never attended a National Convention, here's your chance to learn something new and have some fun. Bring the whole family. There will be things for everyone to do.

Work Safe!

Forrest Davis
President

Editor/Advertising Manager
JOANN HUFF

President
Forrest Davis, Manito

Vice President
Stuart Anderson, Marseilles

1st Vice President
Joe Streitmatter, Wyoming

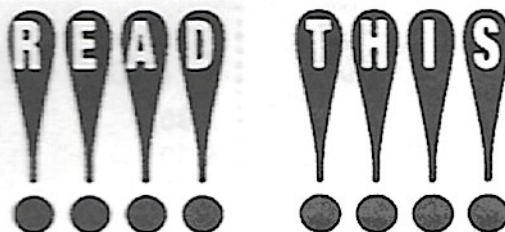
Secretary
JoAnn Huff, Jacksonville

Treasurer
Steve Anderson, Marseilles

Educational Adviser
Michael Hirschi / Kent Mitchell
University of Illinois

The Illinois Land Improvement Contractors Association Newsletter is the official publication of the Illinois Land Improvement Contractors Association, Inc., 604 E. State Street, Jacksonville, Illinois 62650-2130, telephone 217/245-1616.

Subscription price \$1.00 per year, issued bimonthly: January-February; March-April; May-June; July-August; September-October; November-December.



**ILICA BOARD MEETING WILL
BE HELD AT THE
HERITAGE HOUSE
RESTAURANT
3851 S. 6TH STREET
SPRINGFIELD, ILLINOIS
NOVEMBER 2, 2002**

**COMMITTEE MEETINGS
11:00 AM – Convention
1:00 PM – Education
2:00 PM – Membership
2:00 PM – Awards**

Upcoming Meetings



ILICA BOARD MEETINGS

November 2, 2002
2003 Annual Convention
January 16-18, 2003
Holiday Inn Brandywine, Peoria

LICA MEETINGS

February 17-22, 2003
Oklahoma/Tulsa, Oklahoma

July 15-19, 2003
Buffalo, New York

February 25-26, 2003
Contractors Workshop
Northfield Inn & Conference Center
Springfield, Illinois

2003 ILICA CONVENTION Tentative Program

WEDNESDAY January 15

5:00 - 6:00 P.M. Registration *Pre Convene Area*
 3:00 Budget Committee Meeting
 6:00 Convention Committee Dinner
 7:30 Convention Committee Meeting



4:00 N.E.S.H.A.P.S. Regulations for Demolition and Renovation - Dennis Hancock, E.P.A.
 5:00 Associates Hospitality Rooms Open *pool side rooms*
 6:00 Dinner *Atrium*
 6:15 - 7:15 Scavenger Hunt - rules of the game will be on tables
 7:30 Entertainment - Silent Auction (*Atrium*) (50/50 drawing held)
 5:00 - 11:00 Associates Hospitality Rooms Open *pool side rooms*

THURSDAY January 16

8:00 - 11:30 Registration *Pre Convene Area*
 7:30 Busses load for Caterpillar Tour
 8:00- Tour of Mapleton Foundary- Iron casting for engine

Saturday January 18

7:30 Devotional Service *Fon du lac*
 Breakfast (*door prize giveaway*) *Atrium*
 Registration *Pre Convene Area*
General Session Moderator-Ron Masching
Grandview
 Shop Building/Layout - Panel Discussion
 Safety Session - John Cokely-Loss Specialist/Insurance Inspector
 Break
 J.U.L.I.E Update. -Dave Van Wy - J.U.L.I.E. Field Liaison
 Membership Campaign Luncheon (Everyone Welcome)
Grand Ballroom New Members will be recognized
 Annual Business Meeting & Election of Officers
Grandview
 Hospitality Hour (Cash Bar) *Grand Ballroom*
 (Photos taken by professional photographer -Sharon Murphy)
 Awards Banquet Moderator - Ron Schlatter *Grand Ballroom*
 Presidents Hospitality Room Open *Fon du lac*
 All Members invited to attend

3 PROGRAM

Friday - January 16

Get Acquainted Coffee hosted by Presidents Wife



Friday - January 17

1:00 Get Acquainted Coffee hosted by Presidents Wife
 7:30 Devotional Service
 9:00 Board Busses for "River City Tour" of Peoria - (most comprehensive tour of Peoria area which will include; Grand View Drive, Averyville-old industrial area, Moss-High Street historic district, Glenn Oak and Peoria Heights.
 11:30 Lunch -Vonachen's Old Place in Junction City- lunch will served in the Executive Car a private railroad car
 12:45 Shops of Peoria Heights - Over 30 Unique Novelty and Boutique Shops
 2:00 Back to Hotel
 3:15 (*General Session*)
 4:00 (*General Session*)

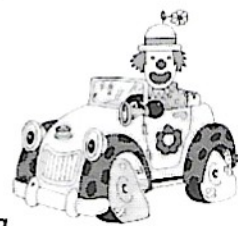
Saturday - January 18

8:45 "Ladies Spa Day" - 3 stations-1) facials 2) color cosmetics
 3) nails -pamper yourself choose one or all three treatments
 Joan Weber with Mary Kay Cosmetics
 10:00 "There's a Lot to Learn About Diamonds" John Fitzgerald certified gemologist, Bremers Jewelers
 11:00 "Figure Enhancement & Getting the Right Fit" - Get your own personal body profile. Weekenders Wardrobe - Fashion Show by Peggy Dyson - Fashion Consultant

8:30 Associates Hospitality Room Open *pool side rooms*

Friday January 17

7:30 Devotional Service *Fon du lac*
 8:00 Breakfast *Atrium*
 8:00 - 6:00 Exhibits Open *Ballroom*
 8:00 - 11:00 Registration Open *Pre Convene Area*
 9:00 **General Session** Moderator - Forrest Davis, President
Grandview
 9:00 ILICA Report - Forrest Davis
 9:15 LICA Report - Barney Flueger, Region IV Vice President
 9:30 ILICA Legislative Report, Dwight Dunbar
 10:00 NRCS Report, Bill Gradle, State Conservationist
 10:15 FSA Report, William J. Graff, Executive Vice President, FSA
 10:30 Break
 10:45 IL Association of Drainage Districts Report
 11:00 AISWCD Report - Mark Besse, President, AISWCD
 11:15 Land Improvement & The General Assembly - Senator _____
 11:45 Adjourn
 12:00 Luncheon
Atrium
General Session cont. *Grandview* Moderator/Forrest Davis
 1:15 - Pay Dirt Program - Spectra Physics -
 2:00 Quick Books / Computer Program-
 3:00 Break
 2:45 - 3:00 Associates Committee Meeting - (*Exhibit Area*)
 3:15 Air Pollution/Open Burning, E.P.A



January 17th - Holiday Inn Brandywine

Get Ready...
We're Going
to have an

Auction!!!!



Do you have some unusual items in your basement, attic or garage that are just taking up space? Let ILICA put them to good use. Bring them to the ILICA auction.

We need everyone's participation to make this a success.

We've already got some great items donated by contractors and associates.

Come join in the fun!
Friday, January 17th at the ILICA Convention.

Bring your auction items to the exhibit area at the Hotel for display

Holiday Inn Brandywine - Reservation Form

ILLINOIS LAND IMPROVEMENT CONTRACTORS ASSOCIATION

Please Reserve the Following Reservations:

- Room with One Bed For _____ persons
- Room with Two Beds For _____ persons

Special Request: (Request honored only if available upon check-in):

GTD Arrival - Guest rooms must be guaranteed by a major credit card number (AX, VS, MC, DC, CB, HI) or first night's deposit paid in advance.

Credit Card #: _____

CANCELLATION POLICY: One night payment due if not cancelled 24 hours prior to arrival. To cancel call direct, ask for & record cancellation number.

Name _____

Street _____

City _____ Zip _____

Phone _____

ANY VARIATION TO DATES ARE SUBJECT TO AVAILABILITY

ARRIVAL: JANUARY 14, 2003

DEPARTURE: JANUARY 19, 2003

GROUP RATE: \$67.00 plus tax _____ one person

\$67.00 plus tax _____ two persons

\$10.00 - rollaway Check in by 4 pm
\$10.00 - extra Check out - noon
Crib - free

**RESERVATION MUST BE MADE
21 DAYS PRIOR TO CONVENTION.
ROOM BLOCK WILL BE RELEASED AT THIS TIME.
12/30/02**

Holiday Inn Brandywine
4400 North Brandywine Drive
Peoria, Illinois 61614

309-686-8000
Fax# 309-682-8237

WE'RE NOT JUST CLOWNING AROUND

We want you to join us at the ILICA Big Top
Attend ILICA's 46th Annual Convention



January 16-17-18, 2003

The Convention and Education Committee have been busy planning educational and entertaining sessions just for you. Why not take advantage of this great opportunity to learn, socialize and have some fun.

Don't miss this year's new and exciting program

Brandywine Holiday Inn
Peoria, Illinois



Educational Workshops • Display Booths

Awards Banquet • Door Prizes • Ladies Program

Caterpillar Tour • Silent Auction

Seven Corpse Mystery Dinner • Scavenger Hunt

)))) Domco))))
"The Finest In The Field"

Wats: 800-475-8144
Phone: 815-427-8144
Fax: 815-427-8150

Eastern Illinois Clay Co.

P.O. Box 657
St. Anne, IL 60964

Manufacturing 4" - 15" Corrugated Tubing

Stocking 18" - 36"

**We use only Virgin Materials
Our Tubing Meets or Exceeds
A.S.T.M. F - 405 and F-667
Under the S.C.S. code 606 for Sub Surface Drainage**

ILICA WORKSHOP TENTATIVE PROGRAM

FEBRUARY 25, 2003

8:30 A.M.	REGISTRATION
9:00	OBJECTIVES OF WORKSHOP
9:15	TILE & TUBING - INSTALLATION PROCEDURES
10:30	BREAK
10:45	TILE & TUBING CONT
12:00	LUNCH
1:00	BENCHMARK LEVELING & CROSS SECTION SURVEYING
2:00	CONTINUED
3:00	BREAK
3:15	REPAIR OF FIELD TILE @ PIPELINE CROSSING
4:00	DRAINAGE LAW
5:00	ADJOURN
6:00	DINNER SPONSORED BY SPRINGFIELD PLASTICS

FEBRUARY 26, 2003

8:00	BIDDING JOBS
9:00	CONTINUED
10:00	BREAK
10:15	SEPTIC TANK INSTALLATION - CODE UPDATE - PUBLIC HEALTH
11:00	FLOOD PLAIN & DAM PERMITS - OFFICE OF WATER RESOURCES
12:00	LUNCH
1:00	INSTALLATION OF BLOCK CHUTE STRUCTURES
2:30	CURRENT TOPICS - PANEL DISCUSSION - ILICA CONTRACTORS
4:00	ADJOURN

A BIT OF ADVICE

Simple steps to start integrating now

You don't need to go on a week-long retreat or take a year off to get your life back in order. Here are five steps you can take now that will start integrating your work and life.

1. Set priorities. Determine what is important in your business and personal life and write it down. This list will provide perspective when things get chaotic.
2. Be still. Carve out self-reflection time each week to allow ideas to percolate.
3. Be in the moment. You never know who you'll meet while with family or pursuing a hobby. Great business contacts can be made at the most unique places.
4. Get away. If you put out energy all day without a break, you'll deplete your physical and mental reserves. Retreat to an unused office, rooftop, or quiet place, even if only for a few minutes.
5. Stick to it. Integration doesn't happen overnight; it's a continual, gradual process. Start with short-term steps and move toward your long-term goal.

*A note from the National Federation
of Independent Business*

NORTHLAND Trenching Equipment, Inc.

Illinois Division

Check out our Web site at: www.northlandtrenching.com

Your Source for New and Used:

- ❖ DYNAPAC Plows & Trenchers
- ❖ Inter-Drain Plows & Trenchers
- ❖ Spectra Precision (Trimble) Lasers

SALES - SERVICE - PARTS

DYNAPAC



Inter-Drain



**SPECTRA
PRECISION**



Trimble.

NORTHLAND TRENCHING EQUIPMENT ...

Stocking the largest selection of Trenchers,
Plows, and Parts of this type in North America -
Keeps You Working!

AL GRABER / KENT SCHMIDT
DIV. MGR. SALES & TECHNICAL REP.

OFFICE: 217-543-4000 • FAX: 217-543-4002
100 IND. PKWY., ARTHUR, IL 61911

TILE DEPTH IMPACTS NITRATE LEVELS IN WATER

A University of Illinois researcher has discovered farmers may reduce the amount of nitrate moving through tile drains if the tiles are placed at the shallow end of recommended depths.

Richard Cooke, U of I agricultural engineer, is researching how to reduce the amount of nitrate moving off fields via field tiles. He has studied different system designs, specifically the depth and spacing of the drain tiles.

Cooke installed a number of tile systems around East-Central Illinois. At one site south of Longview, Cooke placed tiles in the same field at depths of 2, 3, and 4 feet and then measured the water flow and the nitrate levels coming out of the tiles.

"There seems to be a direct correlation between depth and nitrate loads," Cooke said. "The deeper the tile, the more nitrate load you have coming out of the tile. There's more coming out of the 4-foot tile than the 3-foot and more out of the 3-foot tile than the 2-foot."

Cooke attributed the difference to the variation in the amount of water moving through a 4-foot-deep tile compared to a 3- or 2-foot tile. "I didn't notice any difference in nitrate concentration, but there is a difference

in flow rate. This difference in flow rate translates into a difference in nitrate loads," he said.

Based on his results, Cooke suggested farmers install tile at the shallow end of the range of depths recommended in the Illinois Drainage Guide, for example, 3 feet deep in Drummer soil. "The shallow, more closely spaced tiles drain just as fast as, if not faster, than the deeper tiles," he noted.

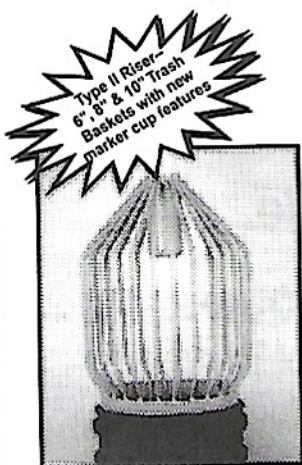
By the time crop roots reach a 3-foot depth, the water table will have dropped even further because of evaporation and the consumption of water stored in the soil — in all but the wettest years, he pointed out.

"In dry years, such as this one," he added, "the shallow tiles will actually be of some benefit. Thirty-year computer simulations that we have done do not show any significant change in yield by going to a shallower system."



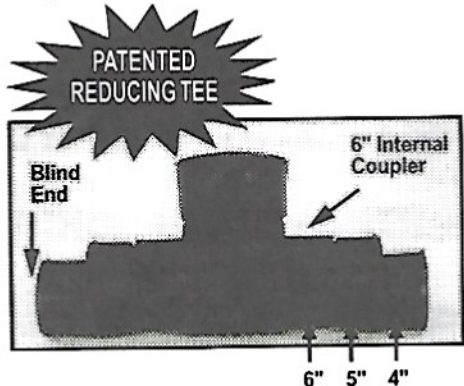
Precision Intakes Full Line of Surface Water Intakes

- 8" & 10" riser with patented 8" & 10" combination Tees. Also 6" square & round risers with patented reducing Tee.
- Constructed of heavy-weight, high-density polyethylene.
- Parts highly adjustable & interchangeable with others on the market.
- Orifice plate placed at tee level or at ground level.
- Exclusive locking device on each part.
- User Friendly-Priced effectively.



Type II Riser—6", 8" & 10" Trash Baskets with new marker cup features

Why inventory 2, when 1 serves both!



"Dealer Inquires Welcome"

PRECISION INTAKES

Norm & Coretha Rozendaal

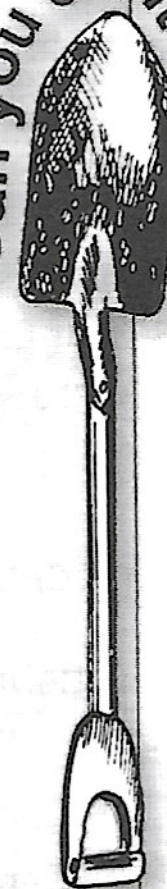
2064 Republic Ave West
Monroe, IA 50170

(800) 932-7611

(641) 259-2651

(641) 259-3218 Fax

Can you dig it?



JULIE

The Illinois One-Call System

Digging responsibly is the only way to dig. If you can dig it, you must call JULIE first!

▶ Excavators are reminded to call JULIE two working days in advance of their excavation project.

▶ JULIE will notify member utilities companies allowing them to mark their underground facilities at the excavation site.

▶ The new legislation took effect on July 1, 2002. Significant changes included the ICC penalty process, definition of important terms, and establishing reasonable business practices. Excavators are encouraged to view the full text at www.julie1call.com.



1-800-892-0123

AND YOU THINK YOU ARE HAVING A BAD DAY...

An insurance company received a claim in the amount of \$79,000 for medical expenses. In response to the company's request for more information, the claimant wrote the following letter:

I am writing in response to your request for additional information for block 3 of the accident report form. I put "trying to do the job alone" as the cause of my accident. You state in your letter that I should explain more fully and I trust that the following details will be sufficient:

I am a bricklayer by trade. On the day of the accident I was working alone on the roof of a new six-story building. When I finished my work I discovered that I had about 500 pounds of brick left over. Rather than carry the brick down by hand, I decided to lower the brick down by barrel using a pulley which, fortunately, was attached to the side of the building at the sixth floor.

Securing the rope at ground level, I went up to the roof, hung the barrel out and loaded the brick into the barrel. Then I went back to the ground and untied the rope, holding it tightly to ensure a slow descent of the 500 pounds of brick.

You will note on the block #11 of your report form that I weigh 135 pounds. Due to my surprise at being jerked off the ground so suddenly, I lost my presence of mind and forgot to let go of the rope. Needless to say, I proceeded at a rather rapid rate up the side of the building. In the vicinity of the third floor I met the barrel coming down. This explains the fractured shoulder and broken collarbone.

Slowed only slightly, I continued my rapid ascent, not stopping until the fingers of my right hand were two knuckles deep in the pulley. Fortunately; at this time I had regained my presence of mind and was able to hold tightly to the rope in spite of the pain. At approximately the same time, however, when the barrel of bricks hit the ground the bottom fell out of the barrel. Devoid of bricks, the barrel now weighed about 50 pounds. I refer you again to my weight of 135 pounds in block #11.

As you might imagine, I began a rather rapid descent down the side of the building, in the vicinity of the third floor I met the barrel coming up. This accounts for the 2 fractured ankles and the lacerations on my legs and lower body.

The encounter with the barrel slowed me enough to lessen my injuries when I landed in the pile of brick. Fortunately, only 3 vertebrae were cracked. I am sorry to report, however, that as I lay there on the brick, in pain, unable to stand and watching the empty barrel 6 stories above me- I again lost my presence of mind. I let go of the rope...

Forget About bob



Come by Altorfer Inc. and see the industry's newest line of Skid Steer Loaders, including the latest Vertical Lift models. While you're here, let us show you our full line of Work Tools and tell you about our many flexible finance plans. We can put you in a genuine Cat® machine for far less than you'd expect.

And you'll forget all about the other guy.

ALTORFER



Springfield, IL
217/529-5541

East Peoria, IL
309/694-1234

Urbana, IL
217/359-1671

Rock Falls, IL
815/625-8774

Cedar Rapids, IA
319/365-0551

Davenport, IA
563/324-1935

Hannibal, MO
573/221-8600

Moberly, MO
660/263-8200



LICA 2003 Convention Round Up

February 10-15, 2003
Renaissance Hotel
Oklahoma City, OK



Sunday, February 9, 2003

6:00-8:00pm Registration

Monday, February 10, 2003

8:00am Pre-tours

7:00-9:00pm Registration

Tuesday, February 11, 2003

8:00am Pre-tours

6:30pm Executive Committee Meeting

7:00-9:00pm Registration

Wednesday, February 12, 2003

7:00am Registration

7:15am Devotions

8:00am Opening General Session

We are hoping to hear from Oklahoma Representative Frank Lucas on the 2002 Farm Bill

9:00am Awards Committee

9:00am **Erosion Control For Slopes & Channels**

Presentation on the newest products to control erosion and water runoff.

9:00am **Basic Surveying**

Seminar presented by a LICA Contractor Member covering the basics of surveying, including reading the rod, checking benchmarks, keeping field notes and checking final construction.

9:00am Associates Advisory Meeting

9:15am **Basic Computer 101: How Does It Work?**

Feel like the rest of the world is "computer friendly" and you're not? Here's your chance to caught up!

9:15am **Skin Cancer - Taking Precautions**

Learn what steps people who work outdoors can take to help prevent skin cancer.

9:30am Exhibit Hall Opens

9:30am LICA Blood Drive Begins

9:30am Ladies Lace & Tea Cups Tour

Must be pre-registered to attend!

9:30am Children's Omniplex Tour

Must be pre-registered to attend!

Wednesday, February 12, 2003 (Continued)

10:30am **Wetlands: Needed Equipment & Products**
Discussion on equipment and products used to develop and protect wetlands.

10:45am **The Basics Of A Spread Sheet Program**
Discover the versatility of the spread sheet and how to incorporate it into your business.

10:45am **Preparing For Age - Financial Planning For Long Term Care**
Discussion on what long term care might mean to you and your family and why you should be prepared - no matter how old you are!

12:00pm Lunch in the Exhibit Hall

1:30pm **Pond Construction, Maintenance & Repair**
Tips, techniques and products for pond maintenance and repair.

1:30pm **Directional Boring**

Products and technology available for underground construction.

1:45pm **OSHA - Trench Excavation**

Learn what the Occupational Safety and Health Administration (OSHA) requires in the way of safety precautions, training and written programs.

1:45pm **Job Take-Off And Computer Technology**

An overview of software available for job take-off and estimating.

3:00pm **Getting Involved In The Legislative Process**

Discussion on the importance of being involved in legislative activities and developing a program for your state chapter.

3:00pm **Waste Reduction, Land Clearing By-Products**

An overview of equipment and products available to dispose of brush and trees.

3:00pm LICA Blood Drive Closes

3:15pm **OSHA- Recordkeeping Requirements**

An overview of recordkeeping and postings required by the Occupational Safety and Health Administration (OSHA).

4:30pm Exhibit Hall Closes

6:00pm **Caterpillar Presidents' Dinner and Tour of National Cowboy Museum**

Must be pre-registered to attend!

Thursday, February 13, 2003

- 7:00am **Registration**
- 7:15am **Devotions**
- 8:00am **Exhibit Hall Opens**
- 8:00am **Equipment Manufacturer's Breakfast in Exhibit Hall (All attendees welcome)**
- 9:00am **Check-Out Procedures**
Discussion by Natural Resources Conservation Service (NRCS) personnel on how contractors can assist with job check-out.
- 9:00am **Bidding A Job**
Do your bids cover the actual cost of doing the project? What's your profit margin? Get some tips from a LICA Contractor Member on making sure all bases are covered when bidding a project.
- 9:15am **Promoting & Marketing Your State Chapter**
Basic marketing principles as they apply to promoting membership and special events - Identifying the market, advertising, direct mail and public relations.
- 9:15am **Large Diameter Pipe Installation**
This is one area that keeps changing and growing. Take this opportunity to get the latest tips on handling and installing larger sizes of pipe.
- 9:30am **LICA Blood Drive Opens**
- 10:30am **Stream Bank Stabilization**
Stream bank stabilization is definitely becoming a larger and larger part of our members' businesses. Discussion will be held on the latest techniques and products available to protect stream banks from erosion.
- 10:45am **Integrating PowerPoint Into Your Presentation**
Whether you're an Executive Director making a presentation to a group of prospective members or a contractor making a bid presentation, this primer on PowerPoint and how it can be used to help you sell is tailor made for you!
- 10:45am **Computer Aided Drainage System Design**
Is your competitor using Computer Aided Design? If so, here's your chance to catch up. If not, this is your chance to set the pace by utilizing the computer for system design, from collecting field data to system installation.
- 11:30pm **Exhibit Hall Closes (For Lunch)**
- 12:00pm **John Deere Luncheon**
- 1:30pm **Engineers & Contractors: Communication and Documentation**
The engineer works for the owner and is looking out for the owner's best interest. This presentation will discuss ways for you to project your profit in a professional manner.
- 1:30pm **Curbing Equipment Theft**
Discussion on common sense steps to take to protect your equipment, as well as new products and technologies available to help.
- 2:30pm **Exhibit Hall Re-Opens**

Thursday, February 13, 2003 (Continued)

- 1:45pm **On-Site Waste: Gravelless System**
In this class, you will learn about the different gravelless products available, how to install them and a sizing comparison of the different systems.
- 1:45pm **Vegetation Options for Erosion**
This presentation will cover new technologies and products available as well as tips on selling hydro seeding as a means of erosion control.
- 3:00pm **Protecting Your Personal & Business Assets**
A discussion of the advantages and disadvantages of various types of business formation; proper insurance coverage; protecting personal assets in the event of a lawsuit against a business entity; and proper methods of ownership of assets to avoid taxation and unnecessary fees upon the death of the business owner.
- 3:00pm **Marketing Tools - Tips For Contractors**
Even if you feel you have never had the need to market your business, you should learn how doing it effectively can enhance your business and increase your profits. Marketing doesn't cost - it pays!
- 3:00pm **LICA Blood Drive Closes**
- 3:15pm **On-Site Waste: New Technologies And Products**
Learn how to work smarter - not harder - and enhance your profitability in the on-site waste market with these new products.
- 3:15pm **Committee Chair Training Session**
This class is a must for anyone who leads a meeting. Tips on conducting a meeting, keeping minutes, planning an agenda and sticking to it.
- 3:15pm **Nominating Committee Meeting**
- 4:30pm **Exhibit Hall Closes - Exhibitor Tear Down**

Special Registration Packages Available

Two-Day Educational Package Includes:

- Admission to Educational Seminars
- Admission to Exhibit Hall
- Wednesday – Exhibit Hall Lunch
- Wednesday – Caterpillar Banquet and National Cowboy Museum Tour
- Thursday – Exhibit Hall Breakfast
- Thursday – John Deere Luncheon

Two-Day Business Package Includes:

- Committee and Region Meetings
- Delegates Session and Board of Directors Meetings
- Friday – Working Lunch
- Saturday – Closing Banquet, Awards Ceremony, and Raffle Drawing

Full Convention Package Includes:

- Admission to Convention seminars, meetings, Exhibit Hall, and meals

Friday, February 14, 2003

- 7:00am **Registration**
- 7:45am **Devotions**
- 8:30am **Committee Meetings (All members welcome!)**
*Legislative
 Past Presidents
 Water Table Management
 Technology*
- 10:00am **Committee Meetings (All members welcome!)**
*By-Laws
 On-Site Waste Management
 Public Relations
 Safety*
- 11:30am **Working Lunch**
- 1:00pm **Committee Meetings (All members welcome!)**
*Conservation, Earthmoving & Excavation
 Long Term Planning
 Membership
 Insurance*
- 2:30pm **Committee Meetings (All members welcome!)**
*Policy
 Convention
 Devotions
 Education*
- 4:00pm **Region Meetings**
All members welcome to attend!

Saturday, February 15, 2003

- 7:15am **Devotions**
- 7:30am **Executive Directors' Breakfast and Meeting**
- 8:00am **Budget Committee Meeting**
- 8:30am **Executive Committee Meeting**
- 10:00am **Delegates Session**
All members welcome to attend!
- 2:30pm **Board of Directors Meeting**
All members welcome to attend!
- 6:00pm **Reception**
- 7:00pm **Closing Banquet - Awards Ceremony -
 Raffle Drawing**



Wednesday's Ladies' & Kids' Program

Lace & Tea Cups



Our day begins with the World Organization of China Painters Museum. This museum is home to a research library, classrooms, and an outstanding collection of hand-painted china from around the world.

Lunch will be provided at a Tea Room with free time after lunch for shopping antiques and crafts.

Next, we tour the Governors Mansion. This stately mansion has been the official residence of Oklahoma's Chief Executive since 1928. Designed by the same architectural firm that was chosen to design the State Capitol Building, the Governor's mansion reflects the stately Dutch Colonial style.

We will feel as if we've stepped into a Winter Wonderland as we enter North Pole City, a store specializing in fine collectibles many exclusive and rare pieces, gifts, home décor and seasonal items. This store has been touted as having the most unique and expansive collection of Christmas items, perhaps even greater than in New York!

Kids Tour



The kids will really be able to get their wiggles out as they spend the day at Omniplex, ten acres of museums and attractions all under one roof!

The Center of the American Indian features artifacts from a time when the tribes roamed the lands of Oklahoma. The Hands On Science Museum has over 350 hands on exhibits to enlighten

and entertain.

The Air Space Museum is one of the nation's premier collections with exhibits focusing on aviation pioneers from Wiley Post to Amelia Earhart. There are also displays highlighting the history of NASA's space program with exhibits and full-scale models of Mercury, Gemini and Apollo space capsules.

While the kids will be able to roam the museums and attractions as their interests command, they will all meet together for lunch and then, it's off to the Omnidome where the 70-foot diameter dome screen make them feel like they are really a part of the action!

Oklahoma City

Tour Packages



Monday, February 10, 2003

Operation And Maintenance Of Upstream Flood Control Structures, Oklahoma Style!

The tour will leave Oklahoma City and head south to Chickasha, Oklahoma in the Washita River Watershed. Oklahoma has 2,100 federally assisted Flood Control structures. Grady Co. Conservation District, alone, has responsibility for O&M on 127 structures. Chickasha is also the site of one of two O&M facilities constructed by the Oklahoma Conservation Commission.

At the shop, you will view several pieces of equipment used for O&M, including a remote control video conduit inspection camera, PVC syphon Systems, along with portable concrete cutting equipment and a mobile shop for repairs and on-site fabrication and installation of replacement parts. Both surface and underwater repairs will be discussed. New technology and materials (HDPE risers, aluminum gates are one example) will be available for inspection.

Then you will take a tour of several upstream flood control structures, including a site which has prematurely reached the end of its designed life in the Grady/ Stephens Co area. A Picnic Style lunch will be included.

The Splendor of the Old West and the Glory of America!

Our tour begins with a tour of Stockyards City founded in 1910 and currently the world's largest stocker/feeder cattle market. Walk the cat walk over the cattle lots and view an auction in progress.

Next, we'll visit The Oklahoma City National Memorial, which rests on the ground where the Alfred P. Murrah building stood. The memorial remembers the 168 lives lost and those that were changed forever in 1995. We will visit the Memorial Center, a 24,000 square foot museum, including some stunning displays and even a recording of the sounds of that morning.

Then, it's off to El Reno, Oklahoma, located on historic Route 66, the grandfather of today's interstate system, where we'll have lunch and a little time see some unique shops.

After lunch, we'll head to Yukon, Oklahoma for a visit to Express Ranch, home of some magnificent Clydesdale horses. These horses are some of the largest you'll ever see. We've been told these horses are very friendly ... and one will even perform a trick!

Tuesday, February 11, 2003

Legends of Wichita

We'll tour Fort Sill, built in 1869 by the famed "Buffalo Soldiers," the Old Post Guardhouse where Geronimo (the last great Apache Warrior) was said to have been imprisoned, and the Field Artillery Museum. In the museum is preserved and displayed a host of items depicting epic cavalry and Indian history of the Fort. We'll visit Geronimo's final resting place and learn why you yell "Geronimo" when you jump from a high place, along with lots of other legends!

We'll visit the Museum of the Great Plains, featuring a Fort replica of the 1830's and a booming Prairie Dog Town. Then we'll have a driving tour of the Wichita Mountains Wildlife Refuge.

We'll see the Holy City, built in the 1930's, on our way to Meer's Store where we will have lunch. Meer's Store is the only remaining building from a once prominent Gold Mining Town! Then we'll travel to Andarko, Indian Capitol of the World, and visit Indian City where Indian dancers in full regalia will entertain us.

Oklahoma Industry and Military

This tour is perfect for those who like to see "how things work!" We'll start the day with a tour of The Daily Oklahoman, Oklahoma's leading newspaper and currently the only daily newspaper published in the state of Oklahoma! We'll see a little of the "controlled chaos" that takes place each and every day in order to get the news out!

Then, it's off to Perry, Oklahoma where we'll have lunch and a private tour of the Charles Machine Works Company, best known as Ditch Witch.

We'll see the process of manufacturing a trencher and trenchless unit. We will view engineering (electrical and dowhole tools), manufacturing, and testing of the electronic equipment.

At the Drill Pipe Facility, we'll see the manufacturing of drill pipe for the directional industry. And then, we'll have a chance to see some of the old equipment and learn how Ditch Witch came about at the Heritage Center.

Then, it's back to Oklahoma City for a self-guided tour of the 45th Infantry Museum and Equipment Display. The museum houses many displays of battle scenes, uniforms, armaments, and personal momentos of Oklahoma veterans. Outside, the grounds are full of tanks, helicopters, jeeps, etc.

Oklahoma City

Things You Should Know

Special Registration Packages Available

Two-Day Educational Package (Wednesday and Thursday, February 12 & 13) includes:

- ◆ Admission to Educational Seminars
- ◆ Admission to Exhibit Hall
- ◆ Wednesday - Exhibit Hall Lunch
- ◆ Wednesday - Caterpillar Banquet and National Cowboy Museum Tour
- ◆ Thursday - Exhibit Hall Breakfast
- ◆ Thursday - John Deere Luncheon

Two-Day Business Package (Thursday and Friday, February 14 & 15) includes:

- ◆ Committee and Region Meetings
- ◆ Delegates Session and Board of Directors Meetings
- ◆ Friday - Working Lunch
- ◆ Saturday - Closing Banquet, Awards Ceremony, and Raffle Drawing

Full Convention Package (Wednesday through Saturday, February 12-15) includes:

- ◆ Admission to all of the Convention functions listed above.

Registration & Cancellation Policy

- ◆ Only individuals registered & badged may attend convention events. The spouse/guest of a registered member need not register to share hotel accommodations, but must register if they wish to participate in the program or meal functions.
- ◆ No registration may be processed without payment.
- ◆ A \$30 processing fee will be incurred on cancellations received prior to January 27, 2003. Cancellations received after January 27, 2003 will be subject to a 50% reduction in refund. No registration refunds will be available after February 7, 2003.
- ◆ Meals will be on an "availability basis" for on-site registrations.
- ◆ Registration fee deadlines will be strictly enforced.

A Bonus For All Pre-Registrations

If you register for the convention prior to February 1, 2003, you will receive a complimentary trolley pass for use during your stay! The trolley gives you easy access to all the attractions right in the heart of Oklahoma City. So, take advantage of this opportunity and PRE-REGISTER!

An Extra Bonus For Early Birds!

In most cases, the early bird gets the worm; however, for LICA's 2003 Round Up, the early bird will have the chance to get cold, hard cash! If you register before the early bird cut-off (December 15, 2002), you will have the chance to get a \$50 bill when you check in! So, REGISTER EARLY!

Attention Executive Directors and Presidents!

We have designed some classes specifically for the Executive Directors! We hope you will take advantage of this opportunity to improve your meeting skills, presentation skills, and maybe your chapter's marketing and legislative capabilities.

We encourage both the Executive Directors and State Presidents to attend the Executive Directors' Meeting. This is where you can share your concerns and successes and network with others in your same "boots!"

Spouse & Kids Programs

Registered family members are welcome to attend any of the scheduled classes or meetings. We are providing, at no charge, a Children's Tour to the Omniplex on Wednesday, February 13, 2003. The Ladies also have the option of registering, for a small fee, for the Lace and Tea Cups Tour on the same day. Please see the registration form for accompanying fees.



Hotel, Parking & Transportation

Driving Directions To Hotel

FROM WEST (Will Rogers Airport/Amarillo, TX)

Take I-40 East (from Airport, travel north on Meridian to I-40 E). Exit Harvey Avenue, and turn right onto Harvey. Travel 2 Blocks to Reno Avenue and Turn Right onto Reno. Travel ½ Block to Robinson Avenue and turn left onto Robinson. Travel 1 Block to Sheridan Avenue and turn right onto Sheridan. Travel one block to Broadway, turn left and then make an immediate right into the Oklahoma City Renaissance Hotel.

FROM NORTH (Stillwater/Ponca City/Wichita)

Travel I-35 South to I-40 West. Exit Downtown/Robinson Avenue and turn Right onto Robinson. Travel 2 Blocks to Sheridan Avenue and turn Right onto Sheridan. Travel one block to Broadway, turn left and then make an immediate right into the Oklahoma City Renaissance Hotel.

FROM SOUTH (Dallas, TX/Ardmore)

Travel I-35 North to I-40 West. Exit Downtown/Robinson Avenue and turn Right onto Robinson. Travel 2 Blocks to Sheridan Avenue and turn Right onto Sheridan. Travel one block to Broadway, turn left and then make an immediate right into the Oklahoma City Renaissance Hotel.

FROM NORTH-EAST (Tulsa/Missouri)

Travel I-44 West to I-35 South. Take I-35 South to I-40 West. Exit Downtown/Robinson Avenue and turn Right onto Robinson Avenue. Travel 2 Blocks to Sheridan Avenue and turn Right onto Sheridan. Travel one block to Broadway, turn left and then make an immediate right into the Oklahoma City Renaissance Hotel.

FROM EAST (Fort Smith, AR)

Travel I-40 West. Exit Downtown/Robinson Avenue and turn Right onto Robinson Avenue. Travel 2 Blocks to Sheridan Avenue and turn Right onto Sheridan. Travel one block to Broadway, turn left and then make an immediate right into the Oklahoma City Renaissance Hotel.

Hotel and Parking

Our headquarters hotel Oklahoma City is the Renaissance Hotel. We have negotiated a discounted room rate of \$115 (plus tax) per night for single, double, triple or quad occupancy. If you are interested in a Concierge King, the price is \$135 (plus tax) per night, with King Suites available for \$155 (plus tax) per night.

In order to qualify for this discounted rate, you must call the hotel at **405-228-8005 by January 18, 2003** and tell them you are with the LICA Convention. After this date, our block will be released the the rates will increase. You may cancel your reservation within 48 hours of arrival without a one-night's penalty. Check-in time is 3:00pm and check-out time is 11:00am

Parking and Airport Transportation Info.

Airport Transportation Services

- ♦ **Regency Limousine:** 405-722-1312 or 800-654-1312
\$25 one way regardless of number of passengers (3 with luggage fit comfortably). Reservations required.
- ♦ **Airport Express:** 405-681-3311
\$13 for one, \$7.50 each for 2, \$6.00 each for three or more Reservations are not required for airport to hotel transfer. Please call for a reservation for hotel to airport transfers.
- ♦ **Yellow Cab Company:** 405-232-6161
\$17.50 for one, \$1 for each additional; Reservations are not required.

Parking

- ♦ **Hotel Valet Parking**
\$14 per day for standard vehicles; \$24 to \$40 per day for oversized vehicles (i.e. RVs – depending on size) (Oversized vehicles can only be valet parked)
- ♦ **Self Parking at the Santa Fe Garage**
\$7 per day, "Come and Go" privileges, if you're a hotel guest; must purchase parking through the Renaissance Hotel.

The above is for informational purposes only. These are private companies. The Renaissance Oklahoma City Convention Center Hotel and LICA are not responsible for any changes in pricing associated with these private companies nor responsible for their services provided.

CONVENTION REGISTRATION

52nd Annual LICA Winter Convention

Renaissance Hotel • Oklahoma City, OK • February 10-15, 2003

Contact Name: _____

Company: _____

Address: _____ City, State & Zip: _____

Phone/Day: _____ Phone/Evening: _____

	Discount Registration - Postmarked by December 15, 2002			General Registration - Postmarked after December 15, 2002		
	Educational Package	Business Package	Full Convention	Educational Package	Business Package	Full Convention
MEMB: Contractors, Spouse, Associates, Government Employee, Consultants	\$175.00	\$100.00	\$230.00	\$210.00	\$120.00	\$280.00
YOUTH: 13-15 years of age	\$110.00	\$70.00	\$150.00	\$135.00	\$85.00	\$180.00
CHILD: 12 years and under (Children 3 years and under are free.)	\$70.00	\$50.00	\$110.00	\$90.00	\$70.00	\$140.00
NON-MEMBER (Note: \$40 may be applied toward membership)	\$200.00	\$120.00	\$270.00	\$265.00	\$145.00	\$320.00

PRINT NAMES FOR NAME BADGES	COMPLETE FOR CHILDREN	FIRST TIMER?	TOTAL
	YOUTH: age _____ CHILD: age _____		
	YOUTH: age _____ CHILD: age _____		
	YOUTH: age _____ CHILD: age _____		
	YOUTH: age _____ CHILD: age _____		
Total Tour Registration (Please complete the Tour Registration Form and send it with this form)			\$

TOTAL TOUR AND CONVENTION REGISTRATION FEES:

\$ _____

PAYMENT METHODS		Expiration Date:
<input type="checkbox"/> Check made payable to LICA	<input type="checkbox"/> Credit Card	
<input type="checkbox"/> Money Order payable to LICA	Mastercard#	
	Visa#	

TOUR REGISTRATION52nd Annual LICA Winter Convention

Renaissance Hotel • Oklahoma City, OK • February 10-15, 2003

Name: _____

Company Name: _____

Note: Departure times are tentative. Check your program upon arrival.

DATE	NAME(S) (Please Print)	AMOUNT	TOTAL
Monday, February 10, 2003			
Watershed Tour (8:00am – 5:00pm)		\$50 each	\$
The Old West & America (8:00am – 5:00pm)		\$50 each	\$
Tuesday, February 11, 2003			
Legends of Wichita (8:00am – 5:00pm)		\$50 each	\$
Oklahoma Industry (Ditch Witch) (8:00am – 5:00pm)		\$50 each	\$
Wednesday, February 13, 2003			
Ladies Lace & Tea Cups (10:00am – 4:00pm)		\$40 each	\$
Children's Omniplex Tour (10:00am – 4:00pm)		FREE	
TOTAL TOUR REGISTRATION			\$

Please return this registration form to:

LICA Convention Account

1101 West High Street

Jefferson City, MO 65109

Questions: Call Debbie Dickens (573/635-8694; Fax: 573/761-0375; E-mail: MLICA@aol.com)**To Register additional attendees, please copy this form.**

Registration & Cancellation Policy: Only individuals registered & badged may attend convention events. The spouse/guest of a registered member need not register to share hotel accommodations,, but must register if they wish to participate in the program or meal functions.

No registration may be processed without payment. A \$30 processing fee will be incurred on cancellations received prior to January 27, 2003. Cancellations received after January 27, 2003 will be subject to a 50% reduction in refund. No registration refunds will be available after February 7, 2003. Meals will be on an "availability basis" for on-site registrations. Registration fee deadlines will be strictly enforced.

GOVERNOR ANNOUNCES \$8.5 MILLION IN FUNDING FOR ILLINOIS RIVER CONSERVATION RESERVE ENHANCEMENT PROGRAM

On Sept. 26, 2002, Governor George H. Ryan announced the release of \$8.5 million for conservation projects on floodplain and other highly erodible land as part of the Illinois River Conservation Reserve Enhancement Program (CREP).

"The Illinois River CREP is the nation's most successful river basin restoration effort and serves as the foundation for my Illinois Rivers 2020 initiative to restore the long term health of this vital waterway," Ryan said. "This funding provides even more landowners with the tools they need to reduce topsoil erosion, improve water quality, and enhance habitat for wildlife and aquatic life throughout the Illinois River basin."

The Conservation Reserve Enhancement Program is a joint state-federal land conservation program providing financial incentives and technical assistance to owners of flood plain land and adjacent environmentally sensitive agricultural lands in the Illinois River watershed. Participation in the program is entirely voluntary. It provides assistance to landowners who agree to plant trees and grasses, create buffers, expand or restore wetlands, and implement other conservation practices to reduce river sedimentation and chemical runoff.

Landowners agreeing to extend their contracts through the U.S. Department of Agriculture Conservation Reserve Program (CRP) beyond 15 years, or agreeing to permanent conservation easements, receive bonus payments from the state, and are eligible for state and federal financial assistance in installing conservation practices on their land.

Since 1998, state appropriations totaling \$48 million have resulted in the commitment of \$260 million in federal funding for the Illinois River CREP. The funding announced today will allow 125 landowners throughout the Illinois River basin to enroll approximately 9,500 acres in permanent conservation easements.

During Governor Ryan's administration, the Illinois CREP has been expanded three times through the addition of the LaMoine River watershed in west-central Illinois in 1999, the Sangamon River basin in central Illinois in 2000, and the inclusion of the balance of the Illinois River watershed in 2001. During Governor Ryan's tenure, nearly 5,000 landowners have enrolled more than 108,000 acres in the program, including approximately 62,000 acres now protected through permanent conservation easements.

In all, more than 5,500 landowners along the Illinois River and its tributaries have enrolled 118,000 acres of flood-prone, environmentally sensitive cropland in CREP.

Liability

Can you risk it?

A DAC Services' study found that 12% of criminal searches reveal prior convictions. Being unaware of an employee's criminal past exposes an employer to liability.



Criminal records are the cornerstone of a thorough background investigation. By conducting a criminal search, an employer gains protection from negligent hiring litigation and theft.

DAC Services provides the services you need for compliance - and to protect your company's valuable assets.

- Criminal Records
- Drug/Alcohol Testing Services
- Background Information
- Motor Vehicle Reports
- Employment Verification
- Worker's Compensation Search
- Seminars / Training



www.dacservices.com

TULSA OFFICE: 4500 S 129th E Ave Ste 200
Tulsa, OK 74134 • 1-800-331-9175

LINCOLN OFFICE: 245 S 84th St Ste 300
Lincoln, NE 68501 • 1-800-288-8504



Exchange - Repair
Hydrostatic Transmissions

for

Agricultural & Construction Equipment





Central Hydraulics, Inc.
513 State Route 251 1/2 El Paso, IL 61738
800-694-9376
www.centralhydraulics.biz

LICA
Member

Located on I-39

GABBING WITH THE GALS...



It is always a joy to visit with you-all even though some of it may be nonsense. We all need a little nonsense now and then to keep a smile on our face or "the wrinkles" will take over. Don't you wonder how much money is spent on items to keep the wrinkles at bay? You can see advertising on television all the time for this or that cream which is guaranteed to make you look younger - even for the men to use! Well, to be fair, why wouldn't the men like to stay young looking as well as women. You have probably experienced the same thing as ye writer, many of the men we see in their 50's and 60's are much better looking than they were in their twenties and thirties. (OK guys, put the mirror down.)

At this writing, the hurricane season is beginning. Interesting how they can put a name to each one - sometimes it is a man's name and sometimes a woman's. Is the weather department trying to have a contest to see which gender of hurricane is the worst? None of them are good, that's for sure. We still read articles about worrying about the oceans - even to the point that California may drop off into the Pacific. Well, for most of us, these things will not happen in our journey on this earth but we do

wonder about our young people and what they may have to go through.

Day Drainage is being hemmed in more and more. We have a storage building to the west and with an empty lot in between, the owner has decided his business is so good he is building another storage building. It surely will block our view of the outside, but since he owns the lot there's nothing we can do. With people moving so much nowadays it is no wonder these places are in demand - some have to store the furniture, etc., until they can place it somewhere else. Our town is a typical small town and we will have four storage buildings when this one is completed, with access to the compartments on either side. That's a lot of storage! My, how our lives have changed. This gal is trying to get rid of excess in the house but that means permanently, not to be stored. We are still a storage place for some of the items our children seem to have forgotten are theirs. In talking with friends recently, we aren't the only couple to experience this phenonema.

It's not too early to start thinking about the ILICA convention in January and finding items we can donate to the auction. Since there is some warning about the dire winter we are about to have, we can hope it will put off the worst until after January, right? Not that it would dampen our spirits, but sure would be better for travel. For those of you who would be first-timers, it is a great time to meet new friends and we have some really interesting people who would be a good friend to know. Be sure to attend the Devotions program at least one morning and start the day

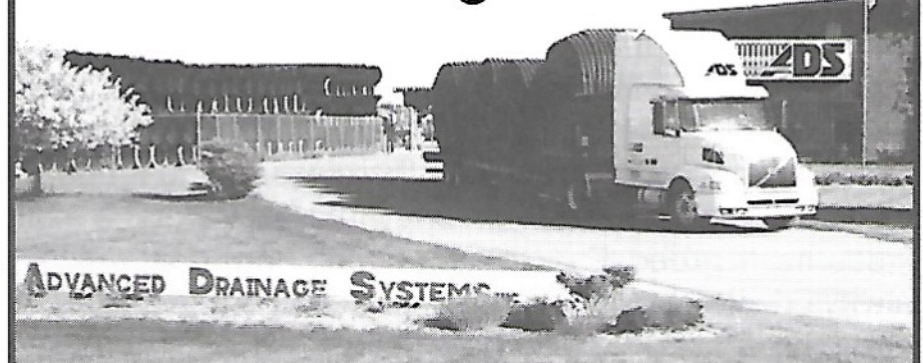
Gabbing With the Gals... (con't to page 22)

2003 NLICA Raffle

The National LICA 2003 Raffle was launched at the Summer Meeting in Moline. Tickets are available from the ILICA office and sold at board meetings. The drawing will be held on the last day of the 2003 National Meeting in February, 2003. You do not have to be present to win. Here are the prizes.

- Grand Prize:** CAT 247 Multi Terrain Loader
- 2nd Prize:** John Deere Diesel Contruction Gator 6x4
- 3rd Prize:** Trimble/Spectra Precision 1242 Laser
- 4th Prize:** \$1,000 toward purchase of Volvo Contruction Equipment
- 5th Prize:** One \$500 coupon towards purchase of Agri-Drain products
- 6th Prize:** One \$500 coupon towards purchase of Agri-Drain products

ADS Delivers For American Agriculture



You can count on
ADS -
the pioneer of
polyethylene
agricultural
drainage more
than 30 years ago -
for all your
drainage needs.

THE MOST
ADVANCED
NAME IN
DRAINAGE
SYSTEMS™

Call your ADS
representative
today.

1-800-733-9554
<http://www.ads-pipe.com>



Gabbing With the Gals... (con't to page 21)
right.

Here's a date that eventually helped Tiger Woods: On Nov. 9, 1961, the PGA voted to strike the clause in their constitution that members be caucasian. November is full of important dates; On Nov. 25, 1925, the Grand Ole Opry made its radio debut on WSM.

More dates to remember: On December 3, 1818, Illinois was admitted as the 21st state. Gosh, this state is getting to be as old as I am! And on Dec, 13, 1577, Sir Francis Drake of England set out with five ships on a 3-year around the world journey. Thinking of how ships were built in that day makes one wonder how they were able to keep going. Fantastic!

This gal read an article in the local paper about the most unusual occupation ever to be - a man has a business that sells waterbeds to farmers for their cows! They say that they want to get all the milk they can and it pays to keep the cows contented and that the cows love there mattresses. A cow is not exactly a small animal and one wonders how they can get up off of one of those. Guess it is paying off for one businessman, more power to him. Hey, guys, is that what you call diversifying?

With the Christmas season coming up, here is a tip: to keep holiday evergreen wreaths and branches from drying out and dropping needles, lay the greens out on plastic garbage bags and spray them with acrylic floor wax from a spray bottle. This will keep in the moisture. Let the wax dry before you hang the wreaths.

One person had brought home to him about his age when he said: "My kids are studying the same things I studied in Current Events." Once in a while we get a shock like that, don't we? With all the children studying computers, we probably won't have anything like that to compare with. This one is appropo to today's economy: The Corps of Engineers found a cost effective way to control the flooding Mississippi this spring. They simply renamed it as "mississippi.com" and its volume dropped by half.

The word for this issue is "vote". Voting in Illinois will be over by the time this is published, but one can always keep it in mind. With the candidates we will have to vote on, it makes one understand why there is sometimes voter "apathy". Sometimes you have to vote on someone you don't care for, either, but is the lesser of two unimpressive candidates. This person has come to believe that if the monetary part of conducting, a campaign were to be controlled so that less (much less) money would be available, we could have more qualified candidates. To some people it is undesirable to think of owing all that money and lose the election and it boggles the mind; that is, if you put a lot of your own money into it. One of the main sins of all nations, it seems, is greed. People are not content to be "well off", "in the bucks" but always desire more. Our world as we knew it is getting to be unreal and until people change their attitudes, nations will not change.

The "fun" season is almost upon it - Thanksgiving turkey, Christmas gifts and all that decorating! Last year people were putting up Christmas lights as soon as Thanksgiving was over with, mainly because we had such good

weather. These weather people keep scaring the bejoobies out of us about the terrible winter we are to have so maybe we ought to start right now just in the event they are correct.

Holiday blessings to each of you and send a card to a shut-in just for the fun of it. See you next year.....

..... Rambling Rose

IRS PROPOSES THE TAXING OF OFF-ROAD EQUIPMENT

As reported in the *Construction Legislative Week in Review*, the IRS has proposed taxing off-road equipment used in construction. Off-road equipment (including mobile cranes, concrete pumpers and other machines used in construction) has been exempt from both excise and fuel taxes because it is not considered to be a highway vehicle. However, the IRS in June proposed a rule that would end this exemption for any non-farm equipment that could be used on roads, whether or not its primary use is off-road. This rule would subject equipment to the new vehicle excise tax (currently 12% of the purchase price), motor fuel taxes (18.4 cents per gallon on gas and 24.4 cents per gallon on diesel), tire excise tax on heavy duty tires and an annual heavy vehicle tax (based on weight capped at \$550). All construction companies would be hit hard by this change, even if the equipment were only used off-road.

The IRS has granted an extension until December 4th for taxpayers to comment on the proposed tax. The AGC opposes this "stealth" tax on construction companies as does L.I.C.A. You are encouraged to write a brief letter in opposition to this tax to the IRS. The Legislative Bulletin is located in the Legislative Info section of www.agc.org or by clicking this link: http://www.agc.org/content/public/PDF/Legislative/Legislative_Bulletin/2002/08-15-02.pdf.

E-mailed to all Executive Directors by Wayne Maresch.



Agri Drain
CORPORATION

America's Most Complete Supplier of
Water Management Products

Call for a free catalog today!

- Wetlands Products
- Controlled Drainage
- Lake/Pond Management

- Pipe and Accessories
- Surface Inlets
- Erosion Control
- Valves and Gates

- Survey Equipment
- Safety Equipment
- Equipment and Tools

P.O. Box 458 ■ 1462 340th Street ■ Adair, IA 50002 ■ Phone: 1-800-232-4742 ■ Fax: 1-800-232-3353
www.agridrain.com ■ email: info@agridrain.com



**Springfield
Plastics, inc.**

“The Contractors Company”

Striving to make your job easier
Fast Deliveries, Knowledgeable Staff
Suppliers of Corrugated Plastic Pipe &
Accessories

100% Virgin Material

Drainage Pipe In Sizes 3” Thru 24”
Dual Wall Pipe In Sizes 4” Thru 48”
Complete Line Of Heaviest Fittings On The Market
PVC Pipe And Fittings
Geotextile Fabric
Riser Inlets

Supporter of ILICA for 24 years

Auburn, IL.

(800)252-3361

**DEERE, MARTIN & TRI-STATE
THREE NAMES YOU CAN DEPEND ON!**

**INDUSTRIAL EQUIPMENT
SALES, SERVICE, RENTALS
AT 9 LOCATIONS**

Goodfield, IL 309-965-2502	Springfield, IL 217-528-4347	Tolono, IL 217-485-6755
Rock Island, IL 309-787-6108	Peru, IL 815-224-4711	Cedar Rapids, IA 319-365-0515
Dubuque, IA 319-588-1950	Ashland, MO 573-657-2154	Palmyra, MO 573-769-2274

BEST TOTAL SUPPORT

MARTIN



TRI-STATE
CONSTRUCTION EQUIPMENT CO.



MARTIN EQUIPMENT OF ILLINOIS, INC.
MARTIN EQUIPMENT OF IA-IL, INC.
TRI-STATE CONSTRUCTION EQUIPMENT CO.

**ALL
YOUR
CONSTRUCTION
EQUIPMENT
NEEDS**



**ROLAND
MACHINERY CO.**

SPRINGFIELD, IL
800-252-2926

BOLINGBROOK, IL
800-826-9608

CARTERVILLE, IL
800-274-7202

MARENGO, IL
800-765-2635

SALES • RENTALS • PARTS • SERVICE

**FULL LINE
KOMATSU DEALER**

KOMATSU

MIDWEST AUGER-AERATOR

18884N 1600 EAST, PONTIAC

1-800-232-7008

ILLINOIS DISTRIBUTOR FOR:

**BUCKEYE TRENCHERS
BUCKEYE AUGER-BACKFILLERS
SPEICHER TRENCHERS**

NEW - USED - PARTS - SERVICE



LIFE'S SHORT - DIG FAST

Buckeye